

RADIATION ALERT™

Ranger

a β γ x



The Ranger offers maximum performance in a lightweight, rugged solution for surveying at the facility or in the field. The Ranger has been designed for industrial environments, but it still has all of the features you've come to love in the lab. The Ranger is a small, handheld, microprocessor-based instrument which offers excellent sensitivity to low levels of alpha, beta, gamma, and x-rays and has built in efficiencies for common isotopes to calculate activity in Bq and DPM. It has a backlit digital display, a red count light, and a beeper that sounds with each count detected. Other features include selectable alert levels, an adjustable timer, and an optional wipe test plate for swipes. Internal memory and the free Observer USB Software allow you to download your data, set computer alarms, and calibrate your instrument!

Detector

Internal Halogen-quenched, uncompensated GM tube with thin mica window, 1.4-2.0 mg/cm² areal density. Effective diameter of window is 45 mm (1.77 in.).

Averaging Periods

Display will update every 3 seconds. At low background levels, the update is the moving average for the past 30-second time period. The timed period for the moving average decreases as the radiation level increases.

Operating Range

mR/hr - .001 (1μR) to 100 CPM - 0 to 350,000
 μSv/hr - .01 to 1000 CPS - 0 to 5000
 Total/ Timer - 1 to 9,999,000 counts

Accuracy

(Referenced to Cs137) Typically ±15% from factory, ±10% with NIST Source Calibration

Size

140 X 68 X 33 mm (5.5 X 2.7 X 1.3 in.)

Weight

10.3 oz (0.64 lbs.)

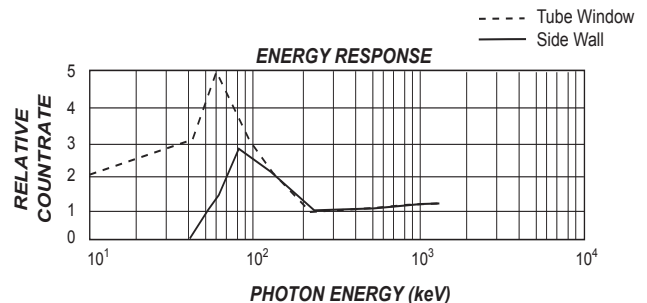
Energy Sensitivity

3340 CPM/mR/hr referenced to Cs¹³⁷

- Detects Alpha down to 2 MeV.
- Detects Beta down to .16 MeV; typical detection efficiency at 1 MeV is approx. 25%.
- Detects Gamma down to 10 KeV through the detector window. Smallest detectable level for I¹²⁵ is .02 μCi at contact.

Built-In Efficiencies

³⁵Sulfur (S35), ⁹⁰Strontium (Sr/y90), ¹³⁷Cesium (Cs137), ³²Phosphorus (P32), ¹⁴Carbon (C14), ¹³¹Iodine (I131), ⁶⁰Cobalt (Co60), and Alpha



SE INTERNATIONAL INC



P.O. Box 39, 436 Farm Rd. Summertown, TN 38483

1-800-293-5759

Fax: 931-964-3564

www.seintl.com

radiationinfo@seintl.com



RADIATION®

A • L • E • R • T

RADIATION ALERT™ Ranger

Display

Backlit Graphic LCD with Backlight

Count Light

Red LED flashes with each radiation event

Alert Set Range

mR/hr .001 - 100 and CPM 1 - 350,000

Alarm Indicator

Internally mounted beeper. 70db @ 1m.
(can be switched off for silent operation)

Outputs

USB for use with Observer USB Software Family

Anti-Saturation

Meter will hold at full scale in fields as high as 100 times the maximum reading.

Power Requirements

Two AA alkaline batteries

Includes

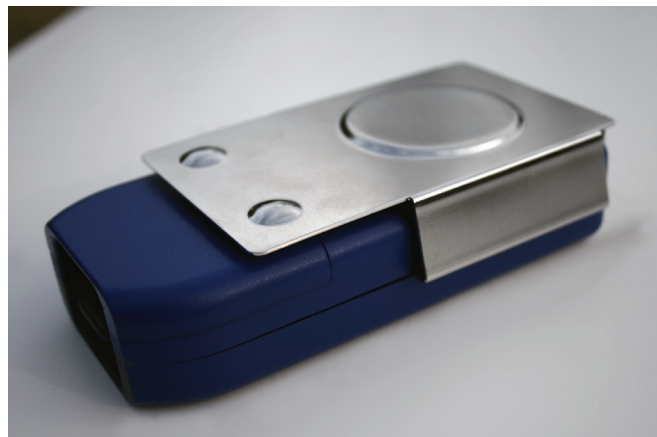
Carrying Case, Xtreme Boot, Stand, Batteries, Mini-USB Cable, Observer USB Software Download, Certificate of Conformance

Options

Wipe Test Plate, Swipes, NIST Calibration

Limited Warranty

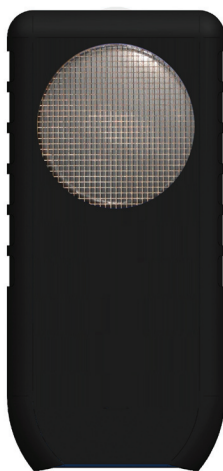
1 year limited



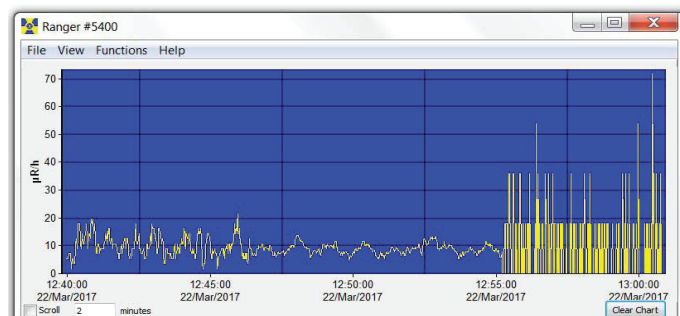
Wipe Test Plate



Ruggedized boot and Stand Included



View of Back with Ruggedized boot



USB Observer Software collects data stored in the internal memory of The Radiation Alert Ranger

SE INTERNATIONAL INC



P.O. Box 39, 436 Farm Rd. Summertown, TN 38483

1-800-293-5759

Fax: 931-964-3564

www.seintl.com

radiationinfo@seintl.com



RADIATION®
A • L • E • R • T