



Flow Sciences, Inc. Engineering Controls Vented Enclosures to Analytical Process Isolators



- Personal Protective Equipment (PPE)
- Vented Balance Enclosure
Dual HEPA
BIBO
Technology
Vibration Elimination
- Hybrid Isolator
Dual HEPA
Removable Glove Panel
Two-Speed Fan
Universal Side Ports
- Glovebox Workstation
Lateral Flow Bio-Containment
LFBC™
ISO Class 5
Interior Universal Side Ports
- Nitrogen Purge "Dry Box"
Inert Gas Flow Controller option
with Relative Humidity or Oxygen Probe
- Analytical Process Isolator™
Glovebox with Negative pressure sample handling area

	***	***	***	***	***	***
10,000 to 1000	1000 to 100	100 to 50	50 to 10	10 to 1	1 to 0.1	0.1 to 0.01
OEB 1	OEB 2	OEB 3	OEB 4		OEB 5	

Occupational Exposure Band (OEB) in $\mu\text{gms}/\text{m}^3$ = micrograms per cubic meter (task duration and facility dependent)
Surrogate Powder Testing Results Available

2021 MINICATALOG FOR STANDARD PRODUCTS

The Flow Sciences, Inc. 2021 Minicatalog features our "Standard Products" engineering controls product range including: Vented Enclosures; Hybrid Isolators; Glovebox Workstations; Nitrogen Purge Boxes and introducing our newest product, the ANALYTICAL PROCESS ISOLATOR (API) for Continuous Process Containment.

The products are arranged showing their product code key and then: Catalog Number, Description, List Price, Dealer Price, and Dimensions. The catalog number sequence is defined with each letter or number described. Dimensions use imperial units of inches with metric equivalent units shown in the catalog number row.

There are many combinations of standard units available and the Minicatalog shows a select list. Not all possible configurations are shown. For example, catalog numbers for systems that need a mesh top fan may be requested by using the letter "G" for (exhaust) choice.


The "Accessories and Services" section, lists frequently purchased items that ensure the system is completed with options for proper exhaust, table, and services often needed for our clients' complete containment solution.

On the last page please see our website <https://www.flowsciences.com>, contact form and QR code. This is one of the many ways our clients contact us and gain information for their applications, by filling out the page or sending us an email addressed to information@flowsciences.com.

We hope this Minicatalog is a useful tool in the selection of standard products. Custom Quotation Requests are always welcome and a way to explore the thousands of solutions in our engineering controls library. As we bring you Virtual Showrooms, Application Training, Certifier Training, Containment Enclosure Galleries, Whitepapers and more please let us know how we may offer support for you and our mutual customers.

Respectfully,

Steve Janz, VP International Sales & Strategic Business Development

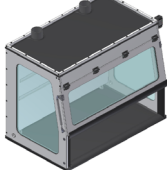
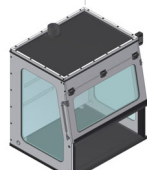
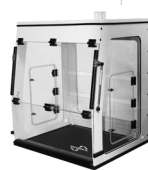
PRODUCT CODE: ETA TOP MOUNT FAN ENCLOSURE										
TYPE	STYLE	MATERIAL	WIDTH	DEPTH	INTERNAL HEIGHT	BASE	EXHAUST	VOLTAGE & FILTER		DRAFT SHIELD
 Vented Balance Enclosure Dual HEPA BIBO Technology Vibration Elimination	E (enclosure)	T (top mount)	A (acrylic)	24	24	24	A (single HEPA, fan)	A (110V, non-integrated alarm)	1 (has a draft shield)	
				36	30		B (BIBO, fan)	C (220v, non-integrated alarm)		
				48			C (single HEPA, no fan)	D (110v, integrated alarm)		
				60		27	D (no fan, no filter)	F (220v, integrated alarm)		
				72			E (BIBO, no fan)	G (110v w/ ULPA)		
				96			F (single HEPA, mesh)	H (220v w/ ULPA)		
						G (BIBO, mesh)	I (110v w/ ULPA, integrated alarm)			
						H (inverted)	J (220v w/ ULPA, integrated alarm)			
							(-) no voltage - for no fan only			

CATALOG NUMBER	DESCRIPTION: ETA TOP MOUNT FAN ENCLOSURE	Width (side to side) inches (mm)	Depth (front to back) inches (mm)	Height (enclosure only) inches (mm)	Total Height add 30" (762) for Fan & Filter Housing inches (mm)
ETA363024ABD	3' VENTED BALANCE ENCLOSURE, DUAL HEPA	35.75 (908.05)	30.00 (762)	27.38 (693.42)	57.38 (1455.42)
ETA483024ABD	4' VENTED BALANCE ENCLOSURE, DUAL HEPA	47.75 (1212.85)	30.00 (762)	27.38 (693.42)	57.38 (1455.42)
ETA603027ABD	5' VENTED BALANCE ENCLOSURE, DUAL HEPA	59.75 (1517.65)	30.00 (762)	27.38 (693.42)	57.38 (1455.42)
ETA723027ABD	6' VENTED BALANCE ENCLOSURE, DUAL HEPA	71.75 (1822.45)	30.00 (762)	27.38 (693.42)	57.38 (1455.42)

ETA363024AAD	3' VENTED BALANCE ENCLOSURE, SINGLE HEPA	35.75 (908.05)	30.00 (762)	27.38 (693.42)	57.38 (1455.42)
ETA483024AAD	4' VENTED BALANCE ENCLOSURE, SINGLE HEPA	47.75 (1212.85)	30.00 (762)	27.38 (693.42)	57.38 (1455.42)
ETA603027AAD	5' VENTED BALANCE ENCLOSURE, SINGLE HEPA	59.75 (1517.65)	30.00 (762)	27.38 (693.42)	57.38 (1455.42)
ETA723027AAD	6' VENTED BALANCE ENCLOSURE, SINGLE HEPA	71.75 (1822.45)	30.00 (762)	27.38 (693.42)	57.38 (1455.42)

PRODUCT CODE: EVP ENCLOSURE VENTED POLYPROPYLENE FRAMED WITH ACRYLIC OR GLASS

TYPE	STYLE	MATERIAL	WIDTH	DEPTH	INT. HEIGHT	VIEWING PANEL	EXHAUST	VOLTAGE & FILTER
E (enclosure)	V (vented)	P (poly)	24	30	39	A (acrylic)	Z (Vent kit, no fan/filter)	A (110v, non-integrated alarm)
			36			E (glass)	X (single HEPA/fan/vent)	C (220v, non-integrated alarm)
			48					



EVP363039AZA	3' LOCAL EXHAUST HOOD, BIFOLD DOOR	35.75 (908.05)	30.00 (762)	39 (990.6)	43 (1092)
EVP483039AZA	4' LOCAL EXHAUST HOOD, BIFOLD DOOR	47.75 (1212.85)	30.00 (762)	39 (990.6)	43 (1092)
EVP363039EZA	3' LOCAL EXHAUST HOOD, OPEN FACE	35.75 (908.05)	30.00 (762)	39 (990.6)	43 (1092)
EVP483039EZA	4' LOCAL EXHAUST HOOD, OPEN FACE	47.75 (1212.85)	30.00 (762)	39 (990.6)	43 (1092)



Hybrid Isolator
Dual HEPA
Removable
Glove Panel
Two-Speed Fan
Universal Side
Ports

PRODUCT CODE: EHP HYBRID ISOLATOR, POLYPRO FRAME WITH ACRYLIC OR GLASS PANEL

TYPE	STYLE	MATERIAL	WIDTH	DEPTH	INT. HEIGHT	BASE	EXHAUST	VOLTAGE & FILTER
E (enclosure)	H (Hybrid)	P (poly/acrylic)	36 (2 glove)	30	27	A (standard)	B (BIBO/standard fan)	D (110v)
		G (poly/glass)	48 (3 glove)			B (bulk powder)	G (BIBO/mesh fan)	F (220v)
			60 (4 glove)			E (4" sanitary in base)		I (110v w/ ULPA)
			72 (4 glove)			F (no base)		J (220v w/ ULPA)
			96 (6 glove)					

CATALOG NUMBER	DESCRIPTION	Width (side to side) inches (mm)	Depth (front to back) inches (mm)	Height (enclosure only) inches (mm)	Total Height add 30" (762) for Fan, Filter and BIBO housing inches (mm)
----------------	-------------	----------------------------------	-----------------------------------	-------------------------------------	---



EHP363027ABD	3' HYBRID ISOLATOR, GLOVE BOX, POLYPROPYLENE FRAME & ACRYLIC VIEW PANEL	35.75 (908.05)	30.00 (762)	27.38 (693.42)	57.38 (1455.42)
EHP363027ABF	3' HYBRID ISOLATOR, GLOVE BOX, POLYPROPYLENE FRAME & ACRYLIC VIEW PANEL	35.75 (908.05)	30.00 (762)	27.38 (693.42)	57.38 (1455.42)
EHP483027ABD	4' HYBRID ISOLATOR, GLOVE BOX, POLYPROPYLENE FRAME & ACRYLIC VIEW PANEL	47.75 (1212.85)	30.00 (762)	27.38 (693.42)	57.38 (1455.42)
EHP483027ABF	4' HYBRID ISOLATOR, GLOVE BOX, POLYPROPYLENE FRAME & ACRYLIC VIEW PANEL	47.75 (1212.85)	30.00 (762)	27.38 (693.42)	57.38 (1455.42)
EHP603027ABD	5' HYBRID ISOLATOR, GLOVE BOX, POLYPROPYLENE FRAME & ACRYLIC VIEW PANEL	59.75 (1517.65)	30.00 (762)	27.38 (693.42)	57.38 (1455.42)
EHP603027ABF	5' HYBRID ISOLATOR, GLOVE BOX, POLYPROPYLENE FRAME & ACRYLIC VIEW PANEL	59.75 (1517.65)	30.00 (762)	27.38 (693.42)	57.38 (1455.42)
EHP723027ABD	6' HYBRID ISOLATOR, GLOVE BOX, POLYPROPYLENE FRAME & ACRYLIC VIEW PANEL	71.75 (1822.45)	30.00 (762)	27.38 (693.42)	57.38 (1455.42)
EHP723027ABF	6' HYBRID ISOLATOR, GLOVE BOX, POLYPROPYLENE FRAME & ACRYLIC VIEW PANEL	71.75 (1822.45)	30.00 (762)	27.38 (693.42)	57.38 (1455.42)
EHG363027ABD	3' HYBRID ISOLATOR, GLOVE BOX, POLYPROPYLENE FRAME & GLASS VIEW PANEL	35.75 (908.05)	30.00 (762)	27.38 (693.42)	57.38 (1455.42)
EHG363027ABF	3' HYBRID ISOLATOR, GLOVE BOX, POLYPROPYLENE FRAME & GLASS VIEW PANEL	35.75 (908.05)	30.00 (762)	27.38 (693.42)	57.38 (1455.42)
EHG483027ABD	4' HYBRID ISOLATOR, GLOVE BOX, POLYPROPYLENE FRAME & GLASS VIEW PANEL	47.75 (1212.85)	30.00 (762)	27.38 (693.42)	57.38 (1455.42)
EHG483027ABF	4' HYBRID ISOLATOR, GLOVE BOX, POLYPROPYLENE FRAME & GLASS VIEW PANEL	47.75 (1212.85)	30.00 (762)	27.38 (693.42)	57.38 (1455.42)
EHG603027ABD	5' HYBRID ISOLATOR, GLOVE BOX, POLYPROPYLENE FRAME & GLASS VIEW PANEL	59.75 (1517.65)	30.00 (762)	27.38 (693.42)	57.38 (1455.42)
EHG603027ABF	5' HYBRID ISOLATOR, GLOVE BOX, POLYPROPYLENE FRAME & GLASS VIEW PANEL	59.75 (1517.65)	30.00 (762)	27.38 (693.42)	57.38 (1455.42)
EHG723027ABD	6' HYBRID ISOLATOR, GLOVE BOX, POLYPROPYLENE FRAME & GLASS VIEW PANEL	71.75 (1822.45)	30.00 (762)	27.38 (693.42)	57.38 (1455.42)
EHG723027ABF	6' HYBRID ISOLATOR, GLOVE BOX, POLYPROPYLENE FRAME & GLASS VIEW PANEL	71.75 (1822.45)	30.00 (762)	27.38 (693.42)	57.38 (1455.42)
EHP483027BBD	4' Bulk Powder HYBRID ISOLATOR, POLYPROPYLENE FRAME & GLASS VIEW PANEL	47.75 (1212.85)	30.00 (762)	27.38 (693.42)	57.38 (1455.42)
EHP483027BBF	4' Bulk Powder HYBRID ISOLATOR, POLYPROPYLENE FRAME & GLASS VIEW PANEL	47.75 (1212.85)	30.00 (762)	27.38 (693.42)	57.38 (1455.42)
EHP603027BBD	5' Bulk Powder HYBRID ISOLATOR, POLYPROPYLENE FRAME & GLASS VIEW PANEL	59.75 (1517.65)	30.00 (762)	27.38 (693.42)	57.38 (1455.42)
EHP603027BBF	5' Bulk Powder HYBRID ISOLATOR, POLYPROPYLENE FRAME & GLASS VIEW PANEL	59.75 (1517.65)	30.00 (762)	27.38 (693.42)	57.38 (1455.42)
EHP723027BBD	6' Bulk Powder HYBRID ISOLATOR, POLYPROPYLENE FRAME & GLASS VIEW PANEL	71.75 (1822.45)	30.00 (762)	27.38 (693.42)	57.38 (1455.42)
EHP723027BBF	6' Bulk Powder HYBRID ISOLATOR, POLYPROPYLENE FRAME & GLASS VIEW PANEL	71.75 (1822.45)	30.00 (762)	27.38 (693.42)	57.38 (1455.42)
EHG483027BBD	4' Bulk Powder HYBRID ISOLATOR, POLYPROPYLENE FRAME & GLASS VIEW PANEL	47.75 (1212.85)	30.00 (762)	27.38 (693.42)	57.38 (1455.42)
EHG483027BBF	4' Bulk Powder HYBRID ISOLATOR, POLYPROPYLENE FRAME & GLASS VIEW PANEL	47.75 (1212.85)	30.00 (762)	27.38 (693.42)	57.38 (1455.42)
EHG603027BBD	5' Bulk Powder HYBRID ISOLATOR, POLYPROPYLENE FRAME & GLASS VIEW PANEL	59.75 (1517.65)	30.00 (762)	27.38 (693.42)	57.38 (1455.42)
EHG603027BBF	5' Bulk Powder HYBRID ISOLATOR, POLYPROPYLENE FRAME & GLASS VIEW PANEL	59.75 (1517.65)	30.00 (762)	27.38 (693.42)	57.38 (1455.42)
EHG723027BBD	6' Bulk Powder HYBRID ISOLATOR, POLYPROPYLENE FRAME & GLASS VIEW PANEL	71.75 (1822.45)	30.00 (762)	27.38 (693.42)	57.38 (1455.42)
EHG723027BBF	6' Bulk Powder HYBRID ISOLATOR, POLYPROPYLENE FRAME & GLASS VIEW PANEL	71.75 (1822.45)	30.00 (762)	27.38 (693.42)	57.38 (1455.42)



Glovebox Workstation, Lateral Flow Bio-Containment Unit™, ISO Class 5 Interior Universal Side Ports

PRODUCT CODE: EGP/EGG Code GLOVEBOX WORKSTATION POLYPROPYLENE FRAMED WITH ACRYLIC OR GLASS									
TYPE	STYLE	MATERIAL	WIDTH	DEPTH	INT. HEIGHT	BASE	EXHAUST	VOLTAGE & FILTER	PASS THROUGH SIDE
E (enclosure)	G (Glovebox)	P (poly/acrylic)	48 (2 glove)	30	24	A (standard)	B (BIBO/standard fan)	D (110v)	0 (left)
		G (poly/glass)	60 (3 glove)			E (4" sanitary in base)	G (BIBO/mesh fan)	F (220v)	1 (right)
			72 (4 glove)			F (no base)		I (110v w/ ULPA) J (220v w/ ULPA)	

CATALOG NUMBER	DESCRIPTION	Width (side to side <input type="checkbox"/>) inches (mm)	Depth (front to back <input type="checkbox"/>) inches (mm)	Height (enclosure only <input type="checkbox"/>) inches (mm)	Total Height add 30" (762) for Fan, Filter and BIBO housing inches (mm)
----------------	-------------	--	---	---	---



EGP483024ABD0 EGP483024ABF0	4' GLOVEBOX WORKSTATION, POLYPROPYLENE FRAME & ACRYLIC VIEW PANEL	47.75 (1212.85)	30.00 (762)	27.38 (693.42)	57.38 (1455.42)
EGP603024ABD0 EGP603024ABF0	5' GLOVEBOX WORKSTATION, POLYPROPYLENE FRAME & ACRYLIC VIEW PANEL	59.75 (1517.65)	30.00 (762)	27.38 (693.42)	57.38 (1455.42)
EGP723024ABD0 EGP723024ABF0	6' GLOVEBOX WORKSTATION, POLYPROPYLENE FRAME & ACRYLIC VIEW PANEL	71.75 (1822.45)	30.00 (762)	27.38 (693.42)	57.38 (1455.42)
EGG483024ABD0 EGG483024ABF0	4' GLOVEBOX WORKSTATION, POLYPROPYLENE FRAME & GLASS VIEW PANEL	47.75 (1212.85)	30.00 (762)	27.38 (693.42)	57.38 (1455.42)
EGG603024EBD1 EGG603024EBF1	5' GLOVEBOX WORKSTATION, POLYPROPYLENE FRAME & GLASS VIEW PANEL	59.75 (1517.65)	30.00 (762)	27.38 (693.42)	57.38 (1455.42)
EGG723024ABD0 EGG723024ABF0	6' GLOVEBOX WORKSTATION, POLYPROPYLENE FRAME & GLASS VIEW PANEL	71.75 (1822.45)	30.00 (762)	27.38 (693.42)	57.38 (1455.42)



Nitrogen Purge "Dry Box" Inert Gas Flow Controller option with Relative Humidity or Oxygen Probe

PRODUCT CODE: END ENCLOSURE NITROGEN DISSIPATIVE									
TYPE	STYLE	MATERIAL	WIDTH	DEPTH	INT. HEIGHT	BASE	EXHAUST	VOLTAGE & FILTER	OPTIONS
E (enclosure)	N (nitrogen)	D (static diss. Acrylic)	36	28	28	A (standard)	C (No fan, w/filter)	K (110V)	0 (left access door) 1 (right access door)
			48				D (no fan or filter)	L (220v)	2 (left access door/right transfer port)
			60						3 (right access door/left transfer port)



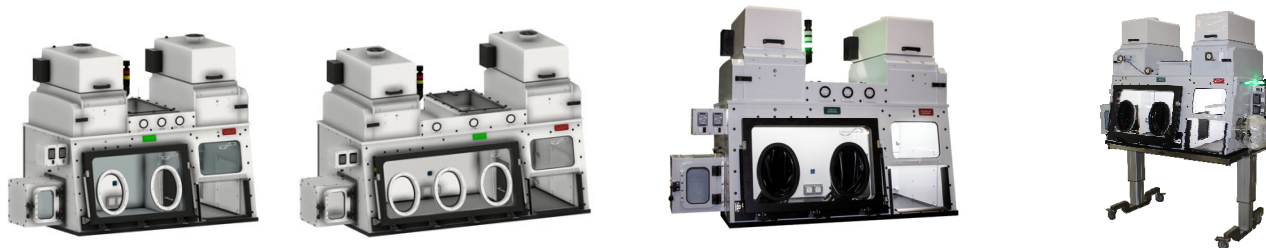
END362828ACK3 END362828ACL3	3' NITROGEN PURGE GLOVE BOX (no fan)	35.75 (908.05)	29.38 (74.62)	27.25 (692.15)	42.7 (1085.58)
END482828ACK3 END482828ACL3	4' NITROGEN PURGE GLOVE BOX (no fan)	47.75 (1212.85)	29.38 (74.62)	27.25 (692.15)	42.7 (1085.58)
END602828ACK3 END602828ACL3	5' NITROGEN PURGE GLOVE BOX (no fan)	71.75 (1822.45)	29.38 (74.62)	27.25 (692.15)	42.7 (1085.58)
FS1501	HIGH FLOW NITROGEN CONTROLLER (shown in picture)				



Analytical Process Isolator™ Glovebox with Negative pressure sample handling area

PRODUCT CODE: ECP/ECG CODE ENCLOSURE DUAL CONTAINMENT POLYPROPYLENE FRAMED WITH ACRYLIC OR GLASS Analytical Process Isolator									
TYPE	STYLE	MATERIAL	WIDTH	DEPTH	INT. HEIGHT	BASE	EXHAUST	VOLTAGE & FILTER	PASS THROUGH SIDE
E (enclosure)	C (Dual Containment)	P (poly/acrylic) G (poly/glass)	60 (2 glove) 72 (3 glove) 84 (4 glove)	36	24	A (standard) E (4" sanitary in base) F (no base)	B (BIBO/standard fan) G (BIBO/mesh fan)	D (110v) F (220v) I (110v w/ ULPA) J (220v w/ ULPA)	0 (left) 1 (right)

CATALOG NUMBER	DESCRIPTION	Width (side to side) inches (mm)	Depth (front to back) inches (mm)	Height (enclosure only) inches (mm)	Total Height: Fan, Filter and BIBO housing inches (mm)
----------------	-------------	----------------------------------	-----------------------------------	-------------------------------------	--



ECP603624ABDO	5' ANALYTICAL PROCESS ISOLATOR, ACRYLIC VIEW PANEL	59.75 (1518)	36 (914)	24.75 (629)	55.91 (1420)
ECP723624ABDO	6' ANALYTICAL PROCESS ISOLATOR, ACRYLIC VIEW PANEL	71.75 (1822)	36 (914)	24.75 (629)	55.91 (1420)
ECP843624ABDO	7' ANALYTICAL PROCESS ISOLATOR, ACRYLIC VIEW PANEL	83.75 (2127)	36 (914)	24.75 (629)	55.91 (1420)
ECG603624ABDO	5' ANALYTICAL PROCESS ISOLATOR, POLYPROPYLENE FRAME & GLASS VIEW PANEL	59.75 (1518)	36 (914)	24.75 (629)	55.91 (1420)
ECG723624ABDO	6' ANALYTICAL PROCESS ISOLATOR, POLYPROPYLENE FRAME & GLASS VIEW PANEL	71.75 (1822)	36 (914)	24.75 (629)	55.91 (1420)
ECG843624ABDO	7' ANALYTICAL PROCESS ISOLATOR, POLYPROPYLENE FRAME & GLASS VIEW PANEL	83.75 (2127)	36 (914)	24.75 (629)	55.91 (1420)

PRODUCT DESCRIPTION: VBSE (Vented Balance Safety Enclosures): Many laboratories need separate fan-filter housings due to facility height or air capacity restrictions. The legacy product range of VBSEs are available in many widths and configurations and can be vented into single stage, dual stage and BIBO Bag-In / Bag- Out configurations. Please inquire per application an example is shown, with Safe Change And BIBO Exhaust Fan.



EVA362319AYA EVA362319AYC	2015 MODEL VENTED BALANCE SAFETY ENCLOSURE (VBSE), WITH REMOTE EXHAUST	35.75 (908.05)	23 (584.2)	19 (482.6)	not applicable
FS4010	FS4020	FAN FILTER HOUSING- CONFIGURATIONS PER SYSTEM AND VENT KITS MAY DIFFER			
FUME HOODS AND CABINETS		AVAILABLE IN MANY CONFIGURATIONS PLEASE INQUIRE FOR FULL DETAILS			



ACCESSORIES & SERVICES (SVCs): PLEASE INQUIRE PER APPLICATION

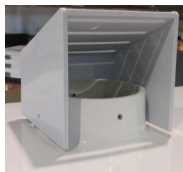
A majority of vented enclosures are ducted and connected to the client's house exhaust (or extract system). The "thimble connection" is a regular addition to a "vent kit" to allow proper operation. Please inquire for the proper exhaust configuration as many are available to accommodate many facility requirements. Other common accessories shown below are examples of regularly purchased parts to a system application.



VENT KIT (Hose & Clamps)



THIMBLE CONNECTION



AIR DIFFUSER



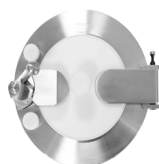
MESH TOP FAN FOR RECIRCULATION



LED LIGHT KIT OPTION



SANITARY FITTINGS



RAPID TRANSFER



IRIS PORT; SS VALVE



SPRAY WAND & INTERNAL OUTLETS OPTIONS



GLOVES AND GLOVE SLEEVE WITH CUFF



PAINTED STEEL TABLE WITH ADJUSTABLE FEET



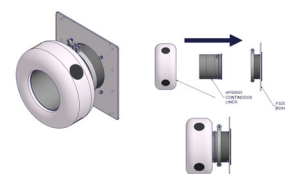
304 SS TABLE WITH



304 SS LIFT TABLE 1800 POUND (816 Kg)



CONTINUOUS LINER PORT WITH 25' BAG: FLANGE AND ADAPTOR, SANITARY FITTING AND REPLACEMENT LINERS



CATALOG NUMBER	DESCRIPTION
2081MS	THIMBLE CONNECTION FOR TOP MOUNT FAN HOUSING
2062VK	8' OF 6" HOSE AND 2 HOSE CLAMPS
FS2085	AIR DIFFUSER FOR TOP MOUNT FANS
APS0825	8" CONT LINER PORT W/ 25' BAG
G 8B15329.75A	BUTYL GLOVES, 8" PORT, SIZE 9.75, AMB.
G 10B15329.75A	BUTYL GLOVES, 10" PORT, SIZE 9.75, AMB.
ATC4830S	48"WX30"D STANDARD TABLE
AEC6030S	60"WX30"D STANDARD ADA LIFT TABLE (LOW PROFILE TABLES AVAILABLE Please inquire)
ATS6030S	60"WX30"D STANDARD TABLE
ATC6030S	60"WX30"D STANDARD TABLE
FS2078	PRINTER SHELF WITH FS1650 ALARM MOUNT

SVCXXX	INSTALLATION SERVICES
SVCXXX	FACTORY ACCEPTANCE TEST SURROGATE POWDER
SVCXXX	SITE ACCEPTANCE TEST SURROGATE POWDER
SVCXXX	IQOQ (INSTALLATION QUALIFICATION OPERATION QUALIFICATION) DOCUMENTS
CRATE3	TRIPLE-WALLED CARDBOARD CRATE CHARGES VARY BY SIZE

NOTE: GLOVES AND SELECTED ACCESSORIES ARE SUBJECT TO PRICE CHANGE AND AVAILABILITY.

PRODUCTS FROM FLOW SCIENCES, INC. ARE SUBJECT TO PRICE CHANGE AND AVAILABILITY.



SINGLE HEPA & CARBON FILTER UNIT WASTE CHUTE & ALARM PRINTER STAND



DUAL HEPA FILTER UNIT AND DOUBLE SAFE WASTE CHUTE



STANDARD ENCLOSURES ON PALLET READY FOR CARDBOARD CRATE

VENTED BALANCE ENCLOSURES

Top Mount Containment ETA Series VBE, CVE, Class I Bio Safety Cabinet

Designed for working with balances and other equipment

Available in many exhaust configurations

Vibration reduction technology for reproducibility and accuracy

Acrylic Construction with Phenolic Resin Base

PROCESS

Handling and manipulation of API (Active Pharmaceutical Ingredients) and other toxic materials where personnel protection is required.

CONTAINMENT

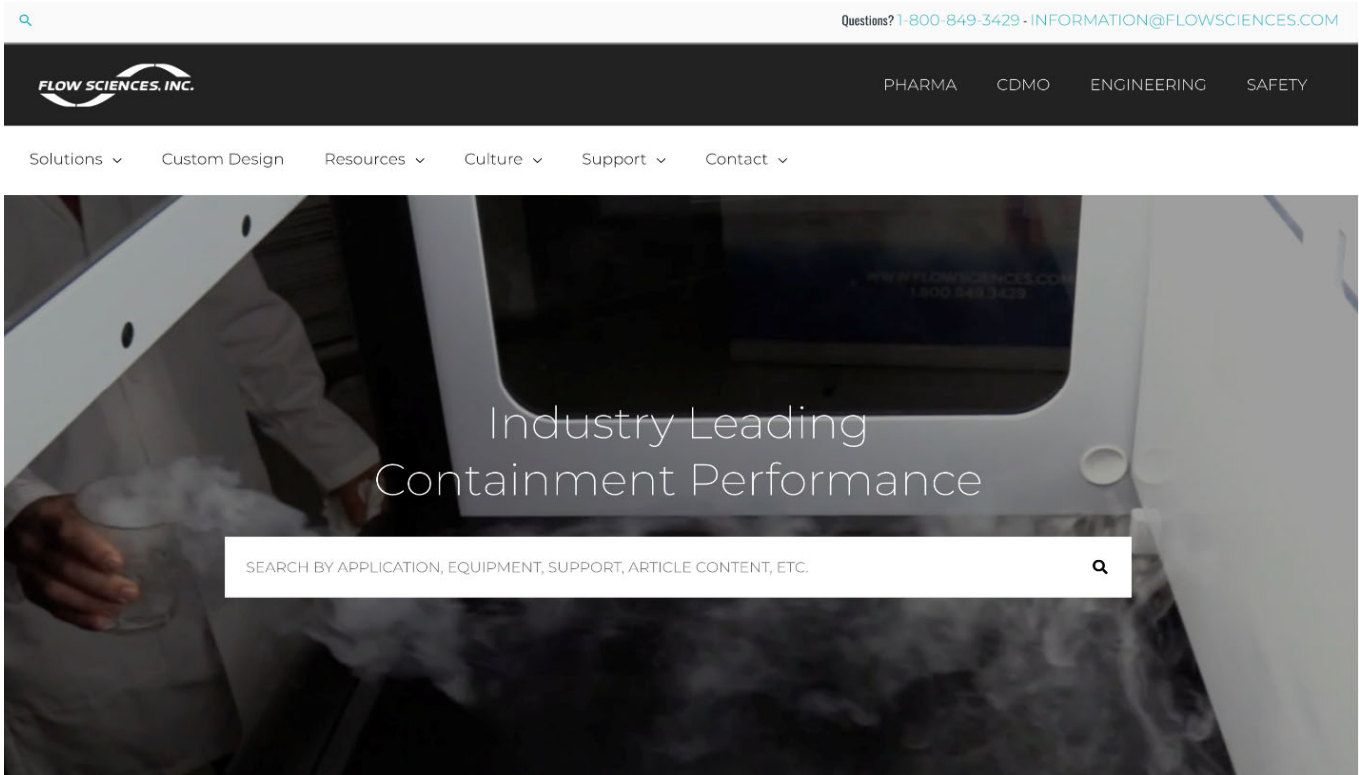
Heavily dependent on potency and quantity of the toxic material being worked with, this unit can contain a wide variety of OEL levels. Consult FSI about your application.

EQUIPMENT

The ETA Series can provide containment for many applications and equipment, including balances, microscopes, particle analysis, and many more.



Please visit us on the web at <https://www.flowsciences.com>; see us on our YouTube channel; Tweet to us on Twitter, or send an email to: information@flowsciences.com



CONTACT US TODAY TO DISCUSS YOUR CONTAINMENT NEEDS

- 1
CONTACT
- 2
PROCESS
- 3
SUBSTANCE
- 4
CONTAINMENT
- 5
DETAILS
- 6
SERVICES

Company

Email

Name

Phone Number



PLEASE SCAN THIS "QR" CODE TO GO TO FLOWSCIENCES.COM



Flow Sciences, Inc. | 1-800-849-3429 | www.flowsciences.com



CONFIDENTIALITY NOTE: This document, is directed in confidence solely to the person(s) to whom it is addressed, or an authorized recipient, and may not otherwise be distributed, copied or disclosed. The contents are subject to intellectual property rights and all such rights are expressly claimed and are not waived.